

# WELCOME TO **YOUNG LONDON TODAY**



## INFORMATION FOR **CARED FOR YOUNG PEOPLE**

Young London Today is a not-for-profit organisation dedicated to supporting young people as they leave local authority care. We enable you to make the successful transition to independent living and education or employment.

*Read me to find out  
loads of useful info!*

## ABOUT US

**Young London Today is a not-for-profit organisation with homes based all around London. The team are committed to ensuring that you get the best out of your stay with us and successfully move on to your own permanent accommodation.**

Our Head Office is in Croydon and we run an “open door” policy which means that if you need help or just want to talk then you are welcome to come and see us.

Our greatest interest is in helping you to set goals and achieve them. Our team will actively support you with whatever your ambitions are, listen to your needs and always be there for you.

## THE SERVICE

**Depending on your need you will live in either a shared accommodation or a staffed accommodation. Our houses are well looked after and staff are friendly and approachable.**

### **What you get:**

- **Your own room** – this is fully furnished and you will be given a welcome pack including new bedding, crockery and cutlery.
- **In a house** – with shared living room, kitchen and bathroom.
- **A keyworker** - this is the person who will help you on a one to one basis.
- **Training time** - this could be learning to cook, helping you to budget, getting a place at college, or anything else you may need support with.
- **24 hour phone line** – in case of emergency you can call us at any time.

**Like with everything else in life there are rules!**

### **You are expected to always:**

- strive for the best
- live in your home peacefully
- meet with your keyworker regularly



**Check out our facebook page or [www.young-london.org](http://www.young-london.org) to find out more or get involved**



**“ Young London gave me a goal and helped me to achieve it! ”**

***Ruth James, looked after young person***

**You only have two years or less to get to grips with the skills you need to embark on life independently, take advantage of the support offered now rather than regret it later.**



**ALWAYS HERE TO HELP  
020 8688 4129**

**INFORMATION FOR  
CARED FOR YOUNG PEOPLE**





## THE EXTRAMILE

YLT offers a number of additional services aimed at enhancing your development through education, workshops and experiences.

- YLT is an **AQA registered centre** allowing us to deliver certificated in house training. You tell us what you want to learn and we will do our best to deliver it.
- YLT Projects (our sister charity) provides wide ranging activities from leisure, sports and arts through to functional skills, enterprise and employability training.
- We have a Youth Board which enables you to feedback on our services and make suggestions. Last year two young people from the board successfully gained full time employment and this year we are recruiting two new apprentices to work with YLT, this could be you!



## GET INVOLVED



Outward bound in 2015



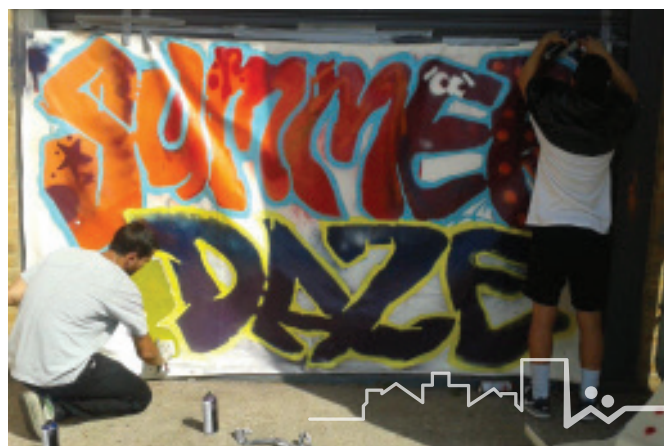
BBC Tour 2015 meeting Charlie Sloth and touring 1 Extra's studio!

“For young men and women to have a future and hope, we need more people who care like Young London Today. They look out for the best interests of the young people.”

*Bravlio Da Cruz, former service user*



Get involved and get creative: T shirt design at YLTP's summer programme



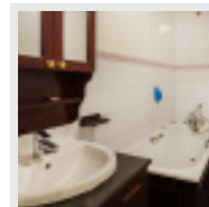
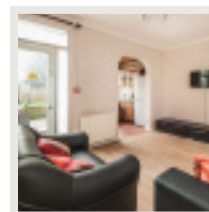
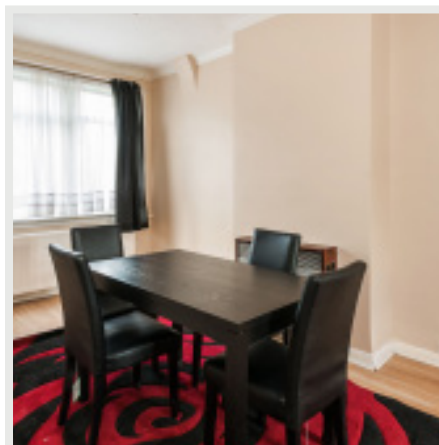
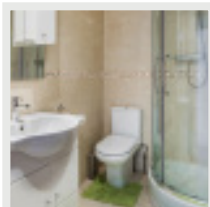
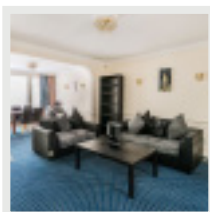
Summerdaze Project 2014



ALWAYS HERE TO HELP  
020 8688 4129

INFORMATION FOR  
CARED FOR YOUNG PEOPLE

**24 HOUR STAFFED HOMES** - These are a selection of our properties but please enquire for further information

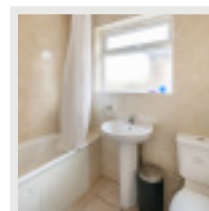
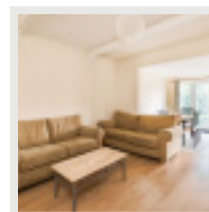
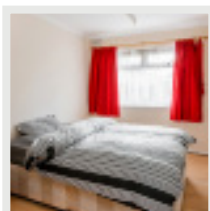
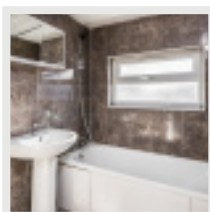
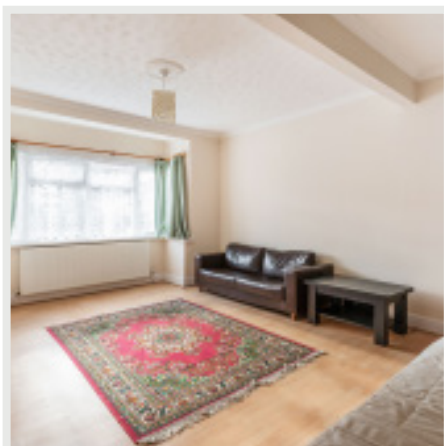


## HOUNSLOW

This property is a **24 hour supervised all girls unit**. It is a five bedroom property, which boasts one en-suite; all bedrooms being of a good size. There is a well proportioned dining space, a chill out area, and a comfortable lounge. It features a modern bathroom with shower and a bright kitchen with breakfast bar. This property has a purpose built conservatory which can be used as extra living space and includes off street parking availability. It is close to local amenities and is a nine minute walk from Hounslow East station.

## ISLEWORTH

This is a **male shared unit** which is a **semi-independent provision**. Based over three floors, this property has four bedrooms, with a lovely size living and dining area. It has a country style kitchen and bathroom, but has a modern twist to it with its internal décor. It has a clean, green garden and built in shed at the rear. This property is close to local amenities and is nine minutes walking distance from Hounslow East train station.



## HOUNSLOW

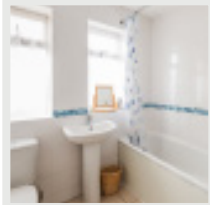
This is one of our newly acquired properties, which is currently being used as a **24 hour male supervised unit**. With its quirky, unusual layout this property boasts four decent sized bedrooms, three of which are allocated upstairs. It has an open plan living and dining area, family size kitchen, and a beautifully tiled modern bathroom. This property has a superb garden, and also comes with off street parking. It is a short bus journey into Hounslow Town centre and 13 minutes walk to Hounslow West train station.

## HOUNSLOW

This 1930's built property is a **24 hour female supervised unit**. It has four bedrooms over three floors, with a downstairs toilet and upstairs bathroom and shower. It has a spacious light modern open plan kitchen, living and dining area with pillars. There is a good sized garden and parking facilities. This property is close to Hounslow East station and is on a local bus route in and out of town.



**24 HOUR STAFFED HOMES** - These are a selection of our properties but please enquire for further information

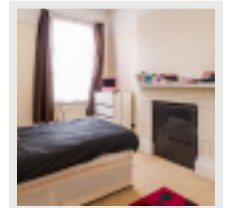
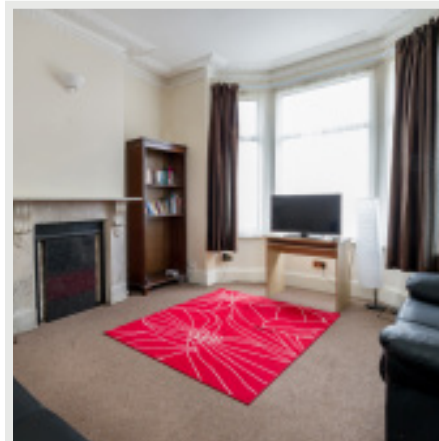
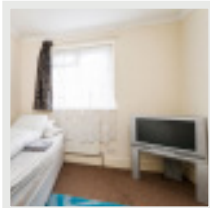


## HOUNSLOW

This property is a **24 hours male supervised unit**. Built on a quiet street it has four bedrooms and two bathrooms. It consists of an open plan country feel kitchen and living area with original beams. It has a brilliant sized garden which has been partially paved. There is driveway parking; however, outside is free to park. This property is 15 minutes from Hounslow station but has local amenities close by.

## ISLEWORTH

This is a **24 hour male supervised unit** situated on the corner of a quiet cul-de-sac. This property features four bedrooms and a bathroom/ shower room. The living area has ample space and is beautifully furnished. There is a modern kitchen/ dining area and a peaceful garden area. This unit also has its own private driveway. The property is a short bus journey into town, and is a 10 minute walk to Osterley train station.



## CROYDON

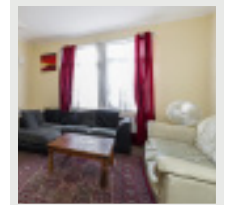
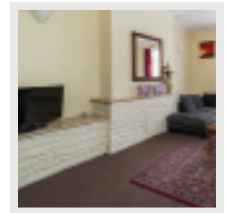
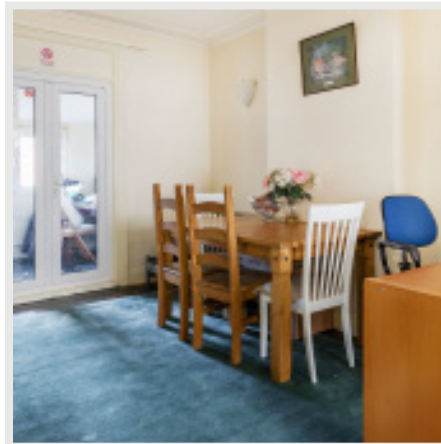
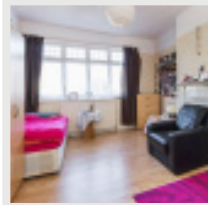
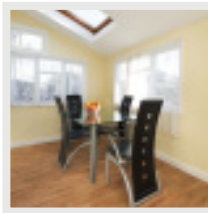
This property is a **24 hour male supervised unit**. It's a four bedroom property with a downstairs toilet and additional toilet and bathroom upstairs. It has a modern kitchen with a decent sized back garden. This property is five minutes walk from Thornton Heath train station, and is within easy access to bus routes. It is also close to local amenities.

## THORNTON HEATH

This beautiful property is a **24 hour female unit**. This Home has three bedrooms and a lovely furnished living area. The kitchen is of a generous size and has a contemporary feel. It has a separate laundry room which leads out onto the garden, and its own private driveway. This property is three minutes away from Thornton Heath station.



**24 HOUR STAFFED HOMES** - These are a selection of our properties but please enquire for further information

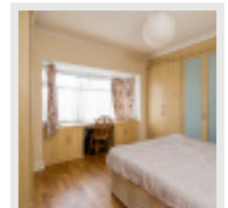
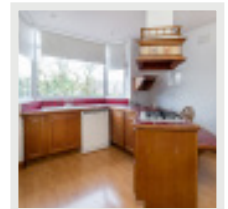
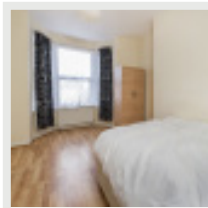
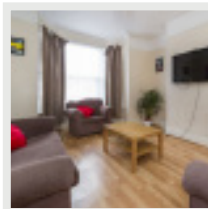


## NORBURY

This is a spacious property set out over three floors and is a **24 hour female supervised unit**. This property consists of three bedrooms, separate toilet and bathroom, a lovely bright comfortable living room, with a family size kitchen and a conservatory. The property is very close to amenities, and is within walking distance to Norbury train station and all bus routes in and out of the Croydon and Streatham area.

## CROYDON

This property is a **24 hour male supervised provision**. It has three bedrooms with an upstairs bathroom and an additional toilet located downstairs. It has a lovely size living room with a country style kitchen. There is also a beautiful garden area. This placement is close to local amenities, there is a short distance to the nearest train station; however, there are regular bus services in and out of the area.



## THORNTON HEATH

This early 1900's property is a **24 hour male supervised provision**. It is a lovely four bedroom house with a bright, inviting living room. There is an upstairs bathroom with an additional toilet downstairs. The modern kitchen is located at the rear of the house which leads out to the beautifully green garden. It is close to local amenities and has regular bus routes stopping nearby. The nearest train station would be Thornton Heath or Norbury.

## SOUTH CROYDON

This beautiful detached house is a **24 hour female supervised provision**. Situated over two floors, this property has 4 bedrooms, a bathroom and additional toilet. The kitchen has a country cottage style to it. It has a beautiful open plan dining and living area, with the beautiful view of the generous size green garden. The kitchen is of an elegant country cottage style. This property is close to local amenities and the train station.

