

WELCOME TO **YOUNG LONDON TODAY**



INFORMATION FOR **CARE COMMISSIONERS**

Young London Today is a not-for-profit organisation dedicated to supporting young people as they leave local authority care. We enable them to make the successful transition to independent living and education or employment.

*Please read for further information
regarding our services*



ALWAYS HERE TO HELP
020 8688 4129

VISIT
www.young-london.org



ABOUT US

Young people leaving care are among the most vulnerable in society and many have suffered considerable trauma, upheaval and abuse. Young London Today (YLT) is dedicated to respond to these often complex needs and committed to making a positive difference in their lives. The leadership team have been successfully delivering accommodation and support for over 15 years, with an excellent track record of securing tangible outcomes.



OUR AIMS

We aim to provide service users with practical life skills in a friendly and homely environment. Our objectives are:

- 1. Promoting independence** through tailored support, focusing on each young person's Individual Care Plan (ICP) in co-operation with their Personal Education Plan (PEP). Using our bespoke 'Achievement folder' young people are supported to achieve their goals
- 2. Encouraging health and well-being** through careful assessment and support
- 3. Ensuring safety, stability and security** through building regular routines, providing high quality accommodation and 24 hour access to support
- 4. Developing the individual** through access to education and training, life skill workshops and leisure opportunities



OUR SERVICES

We take an individual approach to each young person we work with, customising their support to their needs. Working with a wide range of clients we are able to provide the following services:

Accommodation services

- 24 hour support in shared & self contained accommodation
- Low, medium & high support
- Stand alone flats
- Young parents

Emergency accommodation

- Vulnerable young people
- Looked After Children
- Unaccompanied minors
- Those under the Southwark Judgment

Mental health & challenging behaviour

- Specialist support
- Young offenders
- Outreach and accommodation

Research and consultancy

- Young people's issues
- Semi-independent care

YLT can also provide outreach only based services using our network of skilled key workers.





WHO WE WORK WITH

Our experienced team are highly trained and motivated to assist with the most challenging behaviour and circumstances.

We offer support to:

- Young people leaving care
- Young offenders
- High, medium and low risk young people
- Young parents
- Unaccompanied minors
- Young people with complex needs and learning disabilities



WHAT WE DO

The focus of our work is to enable each young person to understand themselves and the world around them so they can live independently. We seek to ensure they can effectively engage with society, navigate their own path and find success through education or employment.

To achieve this we provide:

- 24 hour access support for all our young people
- Dedicated key and support workers
- Training in life skills such as cooking, budgeting and hygiene
- Preparation for sole tenancy sessions
- Support to access benefits, education, employment or training
- Individually tailored semi-independent living skills sessions; focusing on the individual and their needs

The supported homes service is managed by experienced professionals supported by Social Work practitioners and trained staff who are committed to care. Highly qualified Social Care practitioners assist management and NVQ level 3 support staff. Our service can accommodate young people with a wide range of health issues such as diabetes, sickle cell, conduct disorder, ADHD and Epilepsy.

“Young London gave me a goal and helped me to achieve it!”

Ruth James, looked after young person



Get involved and get creative: T shirt design at YLTP's summer programme



THE EXTRAMILE

Young London Today offer a number of additional services aimed at enhancing our young people's development through education, workshops and experiences.

- Acknowledging that a number of our young people are NEET, YLT is an **AQA registered** centre allowing us to deliver certificated in house training for young people using a wide range of educational programmes, including soft skills training and tailor made units which meet the young person's abilities.
- YLT Projects (our sister charity) has been established to deliver additional opportunities for care leavers and has been nominated as the Sainsbury's Crystal Palace charity partner of the year. It provides wide ranging activities from leisure, sports and arts through to functional skills, enterprise and employability training.
- We have a Youth Board which enables the young people to feedback on our services and make suggestions. When a young person is placed with YLT they will automatically be enrolled as a member of the Youth Board.
- As a champion of learning and professional development YLT also offers **Student Placements for social workers in training**.



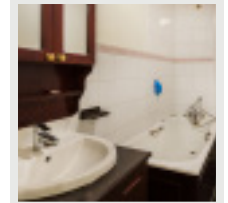
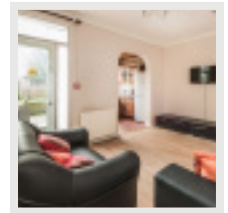
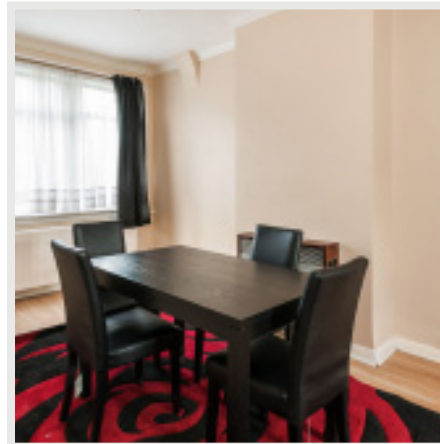
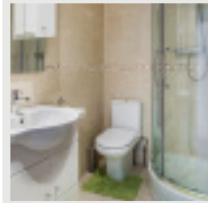
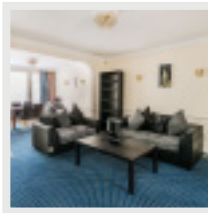
BBC Tour 2015 meeting Charlie Sloth and touring 1 Extra's studio!

“For young men and women to have a future and hope, we need more people who care like Young London Today. They look out for the best interests of the young people.”

Bravlio Da Cruz, former service user



24 HOUR STAFFED HOMES – These are a selection of our properties but please enquire for further information

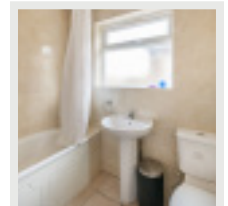
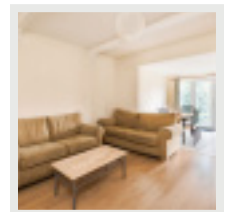
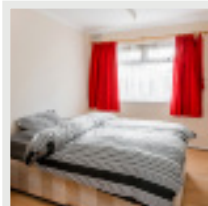
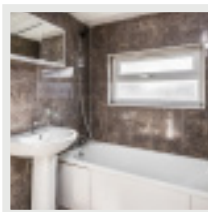


HOUNSLOW

This property is a **24 hour supervised all girls unit**. It is a five bedroom property, which boasts one en-suite; all bedrooms being of a good size. There is a well proportioned dining space, a chill out area, and a comfortable lounge. It features a modern bathroom with shower and a bright kitchen with breakfast bar. This property has a purpose built conservatory which can be used as extra living space and includes off street parking availability. It is close to local amenities and is a nine minute walk from Hounslow East station.

ISLEWORTH

This is a **male shared unit** which is a **semi-independent provision**. Based over three floors, this property has four bedrooms, with a lovely size living and dining area. It has a country style kitchen and bathroom, but has a modern twist to it with its internal décor. It has a clean, green garden and built in shed at the rear. This property is close to local amenities and is nine minutes walking distance from Hounslow East train station.



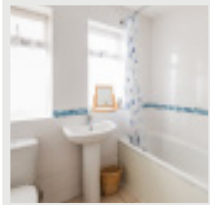
HOUNSLOW

This is one of our newly acquired properties, which is currently being used as a **24 hour male supervised unit**. With its quirky, unusual layout this property boasts four decent sized bedrooms, three of which are allocated upstairs. It has an open plan living and dining area, family size kitchen, and a beautifully tiled modern bathroom. This property has a superb garden, and also comes with off street parking. It is a short bus journey into Hounslow Town centre and 13 minutes walk to Hounslow West train station.

HOUNSLOW

This 1930's built property is a **24 hour female supervised unit**. It has four bedrooms over three floors, with a downstairs toilet and upstairs bathroom and shower. It has a spacious light modern open plan kitchen, living and dining area with pillars. There is a good sized garden and parking facilities. This property is close to Hounslow East station and is on a local bus route in and out of town.

24 HOUR STAFFED HOMES - These are a selection of our properties but please enquire for further information

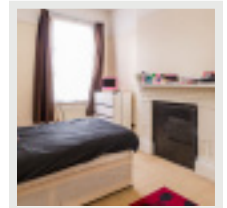
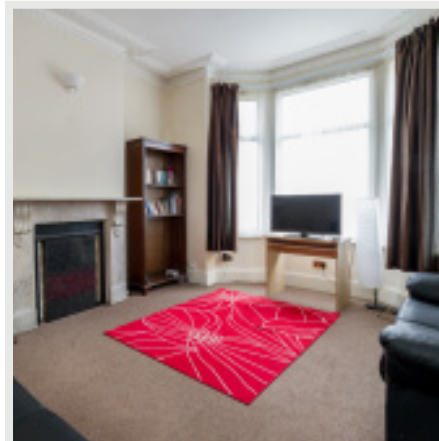
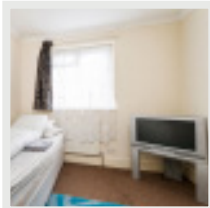


HOUNSLOW

This property is a **24 hours male supervised unit**. Built on a quiet street it has four bedrooms and two bathrooms. It consists of an open plan country feel kitchen and living area with original beams. It has a brilliant sized garden which has been partially paved. There is driveway parking; however, outside is free to park. This property is 15 minutes from Hounslow station but has local amenities close by.

ISLEWORTH

This is a **24 hour male supervised unit** situated on the corner of a quiet cul-de-sac. This property features four bedrooms and a bathroom/ shower room. The living area has ample space and is beautifully furnished. There is a modern kitchen/ dining area and a peaceful garden area. This unit also has its own private driveway. The property is a short bus journey into town, and is a 10 minute walk to Osterley train station.



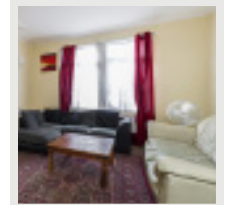
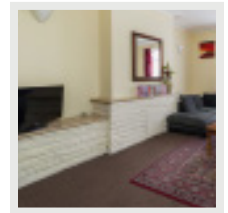
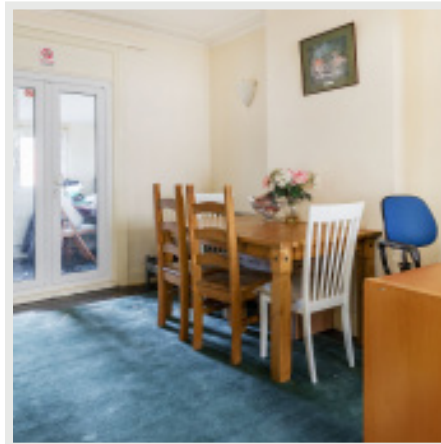
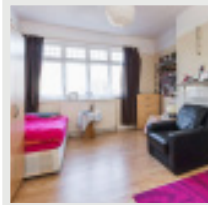
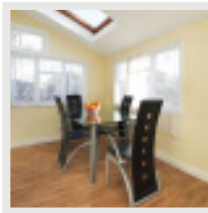
CROYDON

This property is a **24 hour male supervised unit**. It's a four bedroom property with a downstairs toilet and additional toilet and bathroom upstairs. It has a modern kitchen with a decent sized back garden. This property is five minutes walk from Thornton Heath train station, and is within easy access to bus routes. It is also close to local amenities.

THORNTON HEATH

This beautiful property is a **24 hour female unit**. This Home has three bedrooms and a lovely furnished living area. The kitchen is of a generous size and has a contemporary feel. It has a separate laundry room which leads out onto the garden, and its own private driveway. This property is three minutes away from Thornton Heath station.

24 HOUR STAFFED HOMES - These are a selection of our properties but please enquire for further information

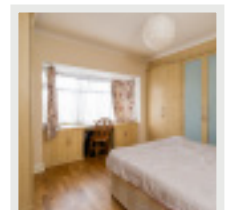
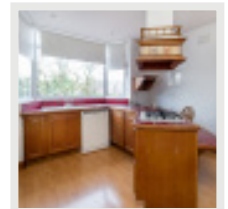
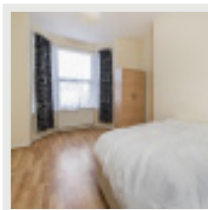
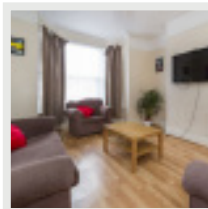


NORBURY

This is a spacious property set out over three floors and is a **24 hour female supervised unit**. This property consists of three bedrooms, separate toilet and bathroom, a lovely bright comfortable living room, with a family size kitchen and a conservatory. The property is very close to amenities, and is within walking distance to Norbury train station and all bus routes in and out of the Croydon and Streatham area.

CROYDON

This property is a **24 hour male supervised provision**. It has three bedrooms with an upstairs bathroom and an additional toilet located downstairs. It has a lovely size living room with a country style kitchen. There is also a beautiful garden area. This placement is close to local amenities, there is a short distance to the nearest train station; however, there are regular bus services in and out of the area.



THORNTON HEATH

This early 1900's property is a **24 hour male supervised provision**. It is a lovely four bedroom house with a bright, inviting living room. There is an upstairs bathroom with an additional toilet downstairs. The modern kitchen is located at the rear of the house which leads out to the beautifully green garden. It is close to local amenities and has regular bus routes stopping nearby. The nearest train station would be Thornton Heath or Norbury.

SOUTH CROYDON

This beautiful detached house is a **24 hour female supervised provision**. Situated over two floors, this property has 4 bedrooms, a bathroom and additional toilet. The kitchen has a country cottage style to it. It has a beautiful open plan dining and living area, with the beautiful view of the generous size green garden. The kitchen is of an elegant country cottage style. This property is close to local amenities and the train station.

SHARED ACCOMMODATION

THORNTON HEATH/NORBURY

This is a three bedroom **female shared independent provision**. Situated over two floors it boasts a bathroom/shower and a good size kitchen and dining area. This property has its own driveway and has a lovely family garden. This property is close to Norbury train station, very close to local amenities and is on a frequent bus route in and out of the town.

SOUTH CROYDON

This property is a male **shared semi-independent provision**. It's a four bedroom house situated over two floors, with bathroom and shower and additional toilet located downstairs. The kitchen is open plan with a dining area. The living room is quite spacious and the décor is contemporary. This house is situated right next to the tram stop in and out of town, and is close to local amenities.

WEST CROYDON

This is a five bedroom **male shared semi-independent provision**. Situated over three floors it has a beautiful country style kitchen which leads out onto a side conservatory and into the garden. There is a bathroom with shower and an additional toilet. This property is located near local amenities and is close to bus routes in and out of Croydon town centre.

BRENT

This is a two bedroom **male shared semi-independent provision**. This property has an open plan living and dining area, which leads onto the modern style kitchen. Located upstairs are two decent size rooms with a bathroom/shower room. There is a beautiful size garden, and a small green area located at the front of the house. This property is located close to local transport services and is close to local amenities.

SOUTH NORWOOD

This is a five bedroom end of terrace house situated over two levels. It is currently used as a **male shared semi-independent provision**. It has a good size modern kitchen and a lovely garden with a garage. This property is close to amenities and close to the train station.

NEWHAM

This is a **male shared semi-independent provision**. It consists of three bedrooms, an open plan kitchen, dining, and living area. This property is located close to local amenities and has excellent links to wider London.

BARNET

This is a **male shared semi-independent provision**. This property boasts 5 bedrooms, a bathroom with an additional toilet. The living room is of a family size which leads through to the dining room. There is off street parking and the property is close to local amenities.

STAND ALONE PROVISIONS

BROMLEY

This is a **stand-alone property**, currently being used as a mother and baby provision. This property is a second floor flat based comprising of two bedrooms, living room, bathroom and kitchen. It is close to local amenities and public transport.

CRYSTAL PALACE

This property is a **stand-alone provision**. It is currently being used as a mother and baby unit. This property is all on one level and consists of two bedrooms. It is close to local amenities, parks and public transport links.

SOUTHWARK

This property is a **stand-alone provision**, which is unsupervised and is for independent living. The property is situated on the ground floor, over one level, and boasts two bedrooms and an unusually designed open plan kitchen and living room area. This property is located next to local amenities, and has sufficient transport in and out of the town. There is also off street parking.

CAMDEN

This property is another **24 hour male supervised unit**. It has three good size bedrooms, bathroom and two toilets. The living room has a contemporary feel and there is a family size kitchen, which leads out onto a beautiful garden. This property is close to local amenities, and is well located to ensure easy transport options.

EAST CROYDON

This property is a **24 hour female supervised provision**. Spread over two floors it boasts three bedrooms, bathroom and additional toilet. The living area is bright and comfortable and has a lovely modern kitchen. This property is very close to amenities and the town centre.